



**STAFFORDSHIRE
HYDRAULIC
SERVICES LTD**

STANDARD POWER PACKS



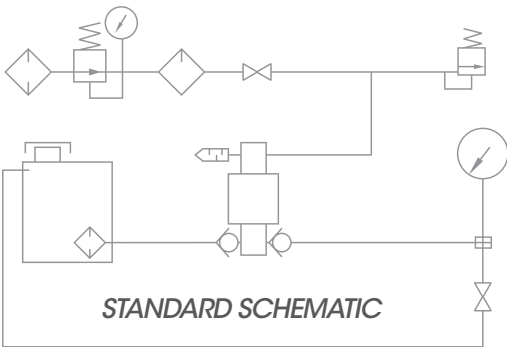
5065

1

2

3

See tables below



1 PUMP SERIES

5W	5000 Series lubricated pump
6W	6000 Series lubricated pump

2 PUMP MODEL DESIGNATION - MAX PRESSURE

5W SERIES		6W SERIES	
015	2,625psi	030	6,000psi
018	3,075psi	050	9,700psi
020	3,625psi	080	14,400psi
030	5,800psi	100	18,000psi
040	7,000psi	151	23,700psi
045	8,600psi	201	32,300psi*
060	10,700psi	301	45,800psi*
080	14,000psi		
100	18,750psi		
160	27,500psi		
250	42,500psi*		

3 ADDITIONAL EXTRAS

TB	Tank By-Pass
IV	Isolation Valve
CRO	Chart Recorder Outlet
SST	Stainless Steel 316 Tank
USB	USB Transducer
ATEX	ATEX certified

Example

5065-5W060-TB-SST

5000W060 series pump c/w tank
by-pass and stainless steel tank.

* Recommended for continuous duty at pressures upto 30,000psi.
Intermittent duty above 30,000psi

+44 (0)1782 771225
SALES@STAFFSHYDRAULICS.CO.UK
WWW.STAFFSHYDRAULICS.CO.UK

Staffordshire Hydraulic Services Limited
Mount Road, Kidsgrove, Stoke-on-Trent,
Staffordshire ST7 4AZ, United Kingdom

PERFECT UNDER PRESSURE

TYPICAL PRESSURE & CONNECTION SIZES

5W SERIES	MWP PSI	MWP BAR	AIR INLET	GAUGE RANGE	OUTLET CONNECTION
015	2,625	181	1/2"BSPP(F)	0-3,000PSI/BAR	1/2"NPT(F)
018	3,075	212	1/2"BSPP(F)	0-5,000PSI/BAR	1/2"NPT(F)
020	3,625	250	1/2"BSPP(F)	0-5,000PSI/BAR	1/2"NPT(F)
030	5,800	400	1/2"BSPP(F)	0-10,000PSI/BAR	1/2"NPT(F)
040	7,000	483	1/2"BSPP(F)	0-10,000PSI/BAR	LF6
045	8,600	593	1/2"BSPP(F)	0-10,000PSI/BAR	LF6
060	10,700	738	1/2"BSPP(F)	0-15,000PSI/BAR	LF6
080	14,000	966	1/2"BSPP(F)	0-20,000PSI/BAR	HF4
100	18,750	1,293	1/2"BSPP(F)	0-20,000PSI/BAR	HF4
160	27,500	1,897	1/2"BSPP(F)	0-30,000PSI/BAR	HF4
250	42,500	2,931	1/2"BSPP(F)	0-50,000PSI/BAR	HF4

6W SERIES	MWP PSI	MWP BAR	AIR INLET	GAUGE RANGE	OUTLET CONNECTION
030	6,000	414	1/2"BSPP(F)	0-10,000PSI/BAR	LF6
050	9,700	669	1/2"BSPP(F)	0-15,000PSI/BAR	LF6
080	14,400	993	1/2"BSPP(F)	0-20,000PSI/BAR	LF6
100	18,000	1,241	1/2"BSPP(F)	0-20,000PSI/BAR	LF6
151	23,700	1,634	1/2"BSPP(F)	0-30,000PSI/BAR	HF4
201	32,300	2,228	1/2"BSPP(F)	0-40,000PSI/BAR	HF4
301	45,800	3,159	1/2"BSPP(F)	0-50,000PSI/BAR	HF4

- Tank By-pass** 1/2"BSPP(F)
- Chart Recorder Port** HF4 plugged
- Stainless Steel Tank** 316 SS, Mesh in tank filter, Sight glass.
- USB Transducer** Range to suit pump max pressure. 400bar, 1500bar, 2000bar, 3000bar, 4000bar



Staffordshire Hydraulic Services | A Graco Company

+44 (0)1782 771225
 SALES@STAFFSHYDRAULICS.CO.UK
 WWW.STAFFSHYDRAULICS.CO.UK

Staffordshire Hydraulic Services Limited
 Mount Road, Kidsgrove, Stoke-on-Trent,
 Staffordshire ST7 4AZ, United Kingdom



PERFECT UNDER PRESSURE